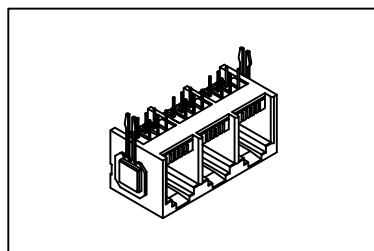


5010 Series Gang Jack



Features:

- * UL recognized, CSA listed.
- * 50 μ gold meets FCC 68 requirements.
- * Industry compatible profiles and foot prints.
- * Available in selective loading.
- * Contact pre-loaded and self aligned.
- * Choice of 2 ports through 12 ports.
- * Mini low profile.

Material:

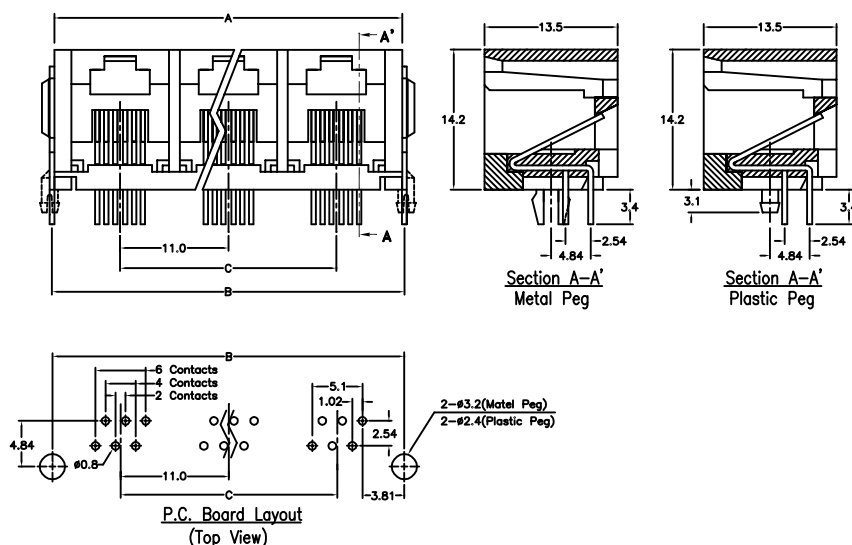
- Housing: 30% Glass filled PBT UL94V-0.
- Contacts: Phosphor Bronze.
- Plating: Selective Gold plated on contact area over Nickel.

Electrical Characteristics:

- Current Rating: 2 AMP.
- Insulator Resistance: 5000M Ω min. at DC 500V.
- Contact Resistance: 30m Ω max. at DC 100mA.
- Operating Temperature: -55 $^{\circ}$ C ~ +105 $^{\circ}$ C.
- Capacitance: 1.5pF max between adjacent contacts.

Mechanical Characteristics:

- Durability: 250 cycles.
- Retention Force: 7.7kg between jack & plug.
- Max Total Mating Force: 2 contacts loaded-350g.
4 contacts loaded-500g.
6 contacts loaded-750g.



Dimensions	No. of Port											
	2	3	4	5	6	7	8	9	10	11	12	
A	Metal	23.20	34.20	45.20	56.20	67.20	78.20	89.20	100.20	111.20	122.20	133.20
	Plastic	23.10	34.10	45.10	56.10	67.10	78.10	89.10	100.10	111.10	122.10	133.10
B	Metal	23.70	34.70	45.70	56.70	67.70	78.70	89.70	100.70	111.70	122.70	133.70
	Plastic	23.10	34.10	45.10	56.10	67.10	78.10	89.10	100.10	111.10	122.10	133.10
C	Metal	11.00	22.00	33.00	44.00	55.00	66.00	77.00	88.00	99.00	110.00	121.00
	Plastic	11.00	22.00	33.20	44.00	55.00	66.00	77.00	88.00	99.00	110.00	121.00

Ordering information

5010 6 6 2 /50 M GRY
Series 6: 6 Position 6: 6 Contacts Loaded 2: 2 Port 50: 50 μ Gold Plated M: Metal Peg GRY: Grey
 Housing 4: 4 Contacts Loaded (2 ~ 12 Port) 30: 30 μ Gold Plated P: Plastic Peg BLK: Black
 (Only) 2: 2 Contacts Loaded 15: 15 μ Gold Plated
 6: 6 μ Gold Plated